



Shorefields School Newsletter

'Learning and achievement for all'

25th January 2019

Dates for the diary:

31st January – Moving On coffee morning
31st January – Siblings Group
7th February – Coffee Morning
18th February 2019 half term



The National School Breakfast Programme

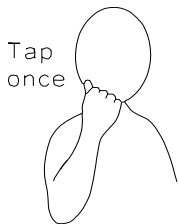
Our school has joined the government's National School Breakfast Programme (NSBP), which is being delivered by the charities Family Action and Magic Breakfast.

As a NSBP School we are pleased to offer a healthy school breakfast (this will be given at snack time so the children will still need breakfast before they come to school) this is available to all.

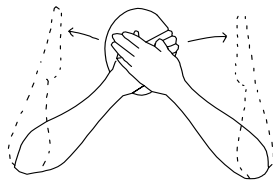
If you would like some more information, please go onto Magic Breakfast website at:

<https://www.magicbreakfast.com/Default.aspx>

Sign of the Week



1st of February is NSPCC number day, a maths-inspired fundraising day!



number day $\rightarrow \begin{matrix} 1 \\ 2 \\ 3 \end{matrix}$ 

Parents & carers currently receiving or seeking overnight respite or short break respite, once again Essex County Council are planning to review their respite service for SEN children in Essex. From April 2019 they are looking at the current respite service within Lavender House & The Maples being reduced down to a one flat operation in order to apparently give parents & carers a greater choice in how respite is given. Gary Knowles will be holding a meeting towards the end of Jan to see where to go forward from here. Please email Gary on info@gknowleskitchenfitter.co.uk to get involved and help to keep this service running.

On the 31st January 2019 for years 9 onwards we will be holding a 'Moving on' coffee morning, outside providers will be coming into school offering advice and guidance for students when they leave school. This will be an ideal opportunity for you to find out what's on offer beyond school life.

Di Spurling will be running a beginners Makaton course for 4 weeks, starting Monday 11 Feb to Monday 11 March, 9.30am to 12. The cost will be £40 total - £30 for the Makaton course books which you will keep (if a couple you can share a book) and £10 each for refreshments. If anyone is interested please book a place by 25 Jan, you can pay on line via School Gateway once your place is confirmed.

Shorefields School Newsletter

'Learning and achievement for all'

School Dinners – w/b 28/1/19 we will be on week 1 of the Menu.

	Monday	Tuesday	Wednesday	Thursday	Friday
Main Meal Option 1	Sweet & sour pork stir fry served with noodles	All day breakfast, sausage, egg, bacon & hash brown	Roast chicken, Yorkshire pudding, stuffing & roast potatoes	Homemade cottage pie	Omega 3 fish fingers served with chips
Main Meal Option 2	Bacon pastry whirls served with new potatoes	Vegetarian sausage, egg, hash brown & tomato	Cheesy beans in a Yorkshire pudding, stuffing & roast potatoes	Homemade cheese & onion roll served with cubed potatoes	Sweet chilli chicken wraps served with chips
Vegetables	Broccoli & mixed vegetables	Baked beans, mushroom	Cauliflower & carrots	Cabbage & sweetcorn	Spaghetti hoops, corn on the cob, bubble & squeak
	Salad Bar	Salad Bar	Salad Bar	Salad Bar	Salad Bar
Dessert/Pudding	Fruit crumble & custard	Fruit platter or chocolate angel delight	Homemade rice pudding with chocolate or strawberry sauce	Victoria sponge finger or muller corner yoghurt	Artic roll with a wedge of melon

MISTLEY KIDS CLUB

The holiday club is open from 8am – 6pm on the following days:

Monday 18th February 'Cooking up tasty treats'

Tuesday 19th February 'Disco and Magic with James

Wednesday 20th February 'Arts & Crafts'

Thursday 21st February 'Gaming bus' a visit from the gamersbus

Friday 22nd February 'Movie day/walk in the wood' (weather permitting)

Contact Claire on 07809176252 to book

COCOCARE

Cococare in Colchester have places available at their creative dance class, suitable for all abilities.

The classes run from 4.30-5.30pm every Tuesday during term time for children and young people aged 7 and upwards.

During February half term, transition days will again be available at Cococare for young people aged between 16-25 to gain experience of adult provision.

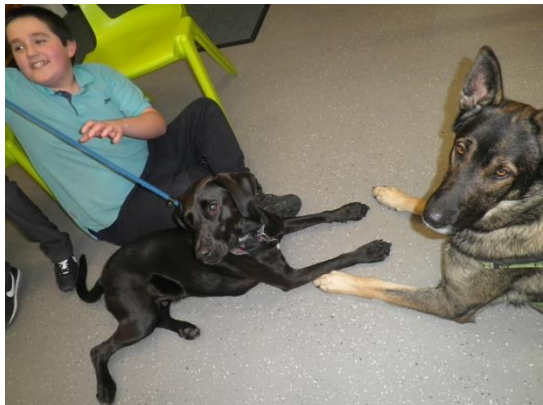
Timetabled activities vary, including art & craft trips, performing arts, cooking, sports, themed workshops and more. Consult the timetable at www.cococare.co.uk or call 01206912021.

The sessions run from 9am-4pm weekdays and 9.30am-3.30pm on Saturdays.

Shorefields School Newsletter

'Learning and achievement for all'

The lovely Dogs for Development came in yesterday, below are a few pictures of students enjoying their time with the dogs.



SPLASH have secured Jungle Adventure in Colchester for private hire so that the children of Shorefields School can have fun within a SEN environment.

Date: Monday 18th February 6-8pm
Cost: £6 per child – PLAY ONLY
£10 – PLAY AND BUFFET MEAL

Other planned events are:

Friday 1st March - Quiz Night 7 for 7.30 start
Friday 22nd March - Bingo Night 7 for 7.30 start

More details to follow.....

Next Splash meeting 14 Feb at 2pm - all welcome

Shorefields School Newsletter

'Learning and achievement for all'

HAVE YOUR SAY

- + Share your experiences of SEN and EHCP support and help improve services in Essex.



essexlocaloffer.org.uk/POET

Essex County Council

Do you receive Special Educational Needs (SEN) support for a special educational need or disability?

Do you have an Education Health and Care Plan (EHCP)?

Are you a parent, carer or practitioner with children or young people who have an EHCP or SEN support?

If the answer is YES, we'd love to hear your thoughts through the POET survey!

- POET is your opportunity to share your experiences of SEN and EHCP support and give your views on what is working and what isn't working.
- It takes just 10 minutes to complete and can be completed once every year.
- Your responses go directly to 'In Control', the charity which developed POET with funding from the Department for Education. Essex County Council will not see your survey.
- In Control send us feedback and we use this to improve our services in Essex, based on what matters to you.
- Your responses will also be used in a national report to help improve the way things are done for others in England.

Access the survey online by visiting essexlocaloffer.org.uk/POET.

To request a paper copy of the survey or for any queries email:

POET@essex.gov.uk

POET

People's opinions and experiences transform services – THANK YOU for getting involved!

Shorefields School Newsletter

'Learning and achievement for all'



Staff and Parents League At Shorefields

January 2019

Dear Parents/Carers,

SPLASH have secured Jungle Adventure for private hire so that the children of Shorefields can have fun within an SEN only environment.

Bookings are allocated on a first come, first served basis as spaces are limited.

**Jungle Adventure, Pear Tree Industrial Estate in Colchester
Monday 18 February 6-8pm**

£6 per child - PLAY ONLY

10 per child - PLAY AND BUFFET MEAL -Crisps/garlic bread/potato wedges/cocktail sausages/carrot and cucumber batons/selection of sandwiches/ cheddar cheese and tomato pitta pizza.

Please inform us of any allergies in advance.

Kindly fill in slip below and return to school office with money
SPLASH Team

.....

Jungle Adventure, 18 Feb - SPLASH

Name of child/children.....

Play only (£6 per head).....

Play and Buffet (£10 per head).....

Food Allergies:-